

# CERTIFICATE OF LOCATION OF GOVERNMENT CORNER

NORTHEAST Corner of Section 10, Township 107N, Range 39W

5th Principal Meridian, State of Minnesota, County of MURRAY

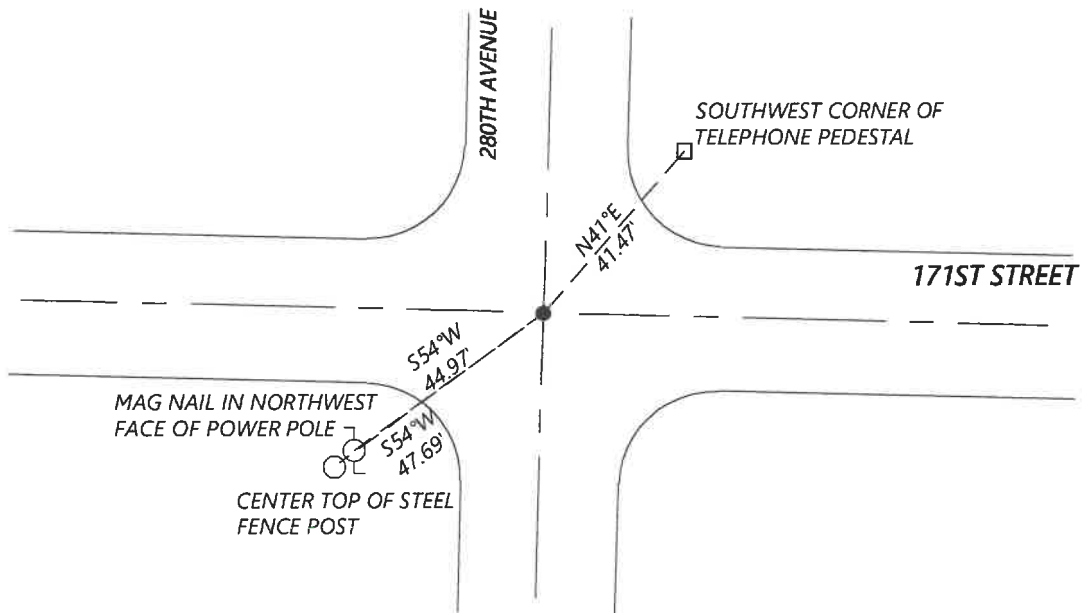
At the corner location shown on the sketch:

On 8/27/2020 found a NO. 4 REBAR WITH CAP LS #12967, 0.8FT BELOW GRADE  
DATE

left monument as found       lowered monument       removed monument (explain)

On \_\_\_\_\_ placed a \_\_\_\_\_  
DATE

### SKETCH OF REFERENCE TIES



N.T.S.

Statement of evidence for this corner location is on back of this page.

I hereby certify that this document was researched and prepared by me or under my direct supervision and that I am a licensed Land Surveyor under the laws of the State of Minnesota.

Signature [Handwritten Signature]

Date 6/16/2021 License No. 45874

Title:

- Land Surveyor       Professional Engineer
- County Surveyor       County Engineer

### OFFICE OF THE COUNTY RECORDER

County of Murray

I hereby certify that this document was filed in the Co.

Recorder's office at \_\_\_\_\_ M. on the \_\_\_\_\_ day of \_\_\_\_\_ A.D. 20 \_\_\_\_\_

County Recorder [Handwritten Signature: Karen Brown]

by JUN 22 2021, Deputy

DOCUMENT NO. \_\_\_\_\_

**Statement of Evidence:**

Northeast Corner of Section 10, Township 107 North, Range 39 West, 5th Principal Meridian, Murray County, Minnesota.

*No GLO Notes.*

*1913 June, Survey record for Section 3 shows a stone on east side of grade at the corner.*

*1980 October, LS #12697 found a field stone at the corner and placed a  $\frac{1}{2}$ " iron and cap #12967 above it.*

*2016 May, Highway Department shows that an iron with cap #12967 was found. They listed the coordinates as: N: 189979.20 E: 569391.11*

*2020 September, Westwood Professional Services searched and found an iron with cap LS #12967 at the corner. Coordinated fit with 2016 Highway Department data. Accepted the found monument and set reference ties.*

Analysis of the recovered data, field evidence and survey measurements, indicates that the monument found is the correct perpetuation of this corner. For additional information concerning this corner please contact Westwood Professional Services.